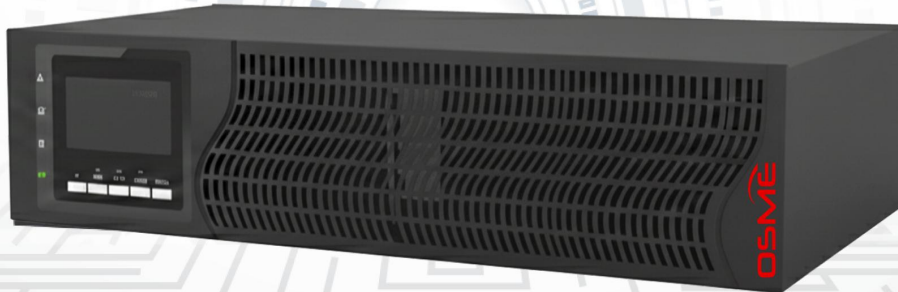


OTL-RM PRO SERIES



Online UPS Rack Mount High frequency 6KVA to 10KVA (Single Phase in and Single phase out)

OTL-RM Pro Series: High reliability in critical server environments

OSME's OTL-RM Pro series models are uninterruptible power supplies with unrivaled electrical protection features for critical server environments. Their dual tower/rack format offers physical adaptability to any site and, together with the built-in PDU strip, provides maximum ease of connection of the loads to be protected.

For applications that require extended backup, additional battery modules and/or solutions with extra chargers can be installed. For applications that require redundant protection or increase the need for power, there is the option of connecting up to 3 devices in parallel.

Numerous environments can be protected by OSME's OTL-RM Pro series UPSs, such as virtualized or non-virtualized server systems, voice and data networks, ERP systems, CRM solutions, document management, etc., all of whose operability depends on the reliability of the electrical supply that powers them.

General Features

- On-line double-conversion technology.
- Digital microprocessor control optimizes reliability.
 - Output power factor PF=0.9
 - Convertible tower/rack format.
- N+X parallel redundancy, support maximum 3 units in parallel.
 - Input power factor correction.
 - UPS starts up without battery.
 - Cold start function.
 - ECO mode operation.
 - Control panel with LCD screen and keypad.
- Backup extensions are available for all power ratings.
- Smart charger design for optimized battery performance.
- Optimization battery group, the quantity of battery: 16/20pcs (Settable).
- Maximum charging current can be expanded to 12A (Long run unit).
 - Emergency power off function (EPO).
- Multiple communication interfaces: RS232 (USB/EPO/Relay card/SNMP card optional).

Osmium Tech Co., Ltd.

Headquarter: Old Madison Pike, Huntsville, AL 35806, United States

Europe Office: Calle Isaac Newton, Planta, 41092 Sevilla, ESPAÑA

www.osme-usa.com



Technical Specifications

MODEL		OTL-RMPro 6000B / OTL-RMPro 6000EB	OTL-RMPro 10000B / OTL-RMPro 10000EB
RATED POWER		6KVA / 5.4KW	10KVA / 9KW
TECHNOLOGY		On-line double conversion, DSP control	
INPUT	Rated voltage	Single-phase Three wire (1 ϕ +N+PE) 220 / 230 / 240VAC	
	Voltage range	165 ~ 275 VAC	
	Rated frequency	50 / 60 Hz (45-65Hz)	
	Power factor	> 0.99	
OUTPUT	Rated voltage	Single-phase Three wire (1 ϕ +N+PE) 208 / 220 / 230 / 240VAC	
	Voltage accuracy	$\pm 1\%$	
	Power factor	0.9	
	THDv (linear load)	<3%	
	Frequency	50 / 60 Hz ($\pm 0.1\%$ in battery mode)	
	On-line performance	Up to 93.5%	
	Waveform	Pure Sinewave	
	Crest factor	3:1	
	Overload	>125% for 1 min. / >150% for 200 ms	
BATTERY	Battery type	LiFePO4 and Lead acid, sealed, maintenance free	
	Rated voltage	192 VDC / 240 VDC (Settable)	
	Charging voltage	192.2 VDC / 274 VDC	
	Charging current (Standard)	1A	
	Charging current (Long)	10A (Max.)	
SYSTEM	Transfer time	0 ms (line mode \rightarrow battery mode)	
	Communication interface	RS232 port (Standard), USB, SNMP, dry contacts, and RS485 (Optional)	
GENERAL	Operating temperature	0°C ~ +40°C	
	Relative humidity	Up to 95%, non-condensing	
	Maximum operating altitude	< 1500 m	
	Acoustic noise at 1 meter	< 55 dB	
STANDARD	Safety	EN-IEC 62040-1	
	Electromagnetic compatibility	EN-62040-2	
	Operation	VFI-SS-11 (EN-62040-3)	
	Corporate certification	ISO 9001, ISO 14001, ISO 45001	
PHYSICAL	Dimensions (L x W x H) mm	440 x 625 x 86.5	
	Weight (kg)	16	18

*information subject to change without prior notice

Osmium Tech Co., Ltd.

Headquarter: Old Madison Pike, Huntsville, AL 35806, United States

Europe Office: Calle Isaac Newton, Planta, 41092 Sevilla, ESPAÑA

www.osme-usa.com

