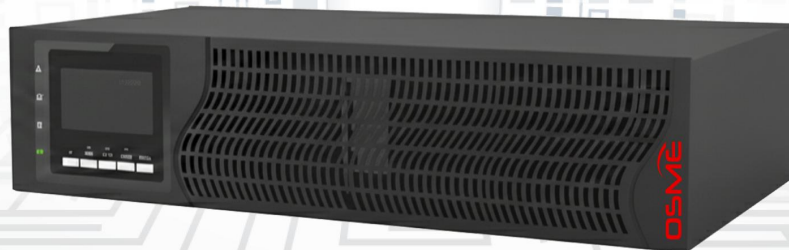


OTL-RM SERIES



————— **Online UPS Rack Mount High frequency 1KVA to 3KVA (Single Phase in and Single phase out)** —————

OTL-RM Series: Maximum protection density

OSME's OTL-RM series are uninterruptible power supply (UPS) systems that offer the most reliable On-line double conversion technology on the market, with output power factor PF=0.9, This format adapts to suit any tower/rack environment, lithium-ion batteries, and a wide range of options for communication.

Adaptable to any edge computing environment, OSME's OTL-RM series offers top-level security in a compact format with a wide range of communication options for IT servers, voice and data networks, video streaming, unified communications, document management and CAD/CAM.

General Features

- On-line double-conversion technology.
- Digital microprocessor control optimizes reliability.
 - Output power factor PF=0.9
 - Convertible tower/rack format.
 - Input power factor correction.
 - UPS starts up without battery.
 - Cold start function.
 - ECO mode operation.
- Control panel with LCD screen and keypad.
- Backup extensions are available for all power ratings.
- Smart charger design for optimized battery performance.
- Maximum charging current can be expanded to 12A (Long run unit).
 - Emergency power off function (EPO).
- Multiple communication interfaces: RS232 (USB/EPO/Relay card/SNMP card optional).

Osmium Tech Co., Ltd.

Headquarter: Old Madison Pike, Huntsville, AL 35806, United States

Europe Office: Calle Isaac Newton, Planta, 41092 Sevilla, ESPAÑA

www.osme-usa.com



Technical Specifications

MODEL		OTL-RM1000B / OTL-RM1000EB		OTL-RM2000B / OTL-RM2000EB		OTL-RM3000B / OTL-RM3000EB	
RATED POWER		1KVA / 0.9KW		2KVA / 1.8KW		3KVA / 2.7KW	
TECHNOLOGY		On-line double conversion, DSP control					
INPUT	Rated voltage	Single-phase Three wire (1 ϕ +N+PE) 220 / 230 / 240VAC					
	Voltage range	165 ~ 275 VAC					
	Rated frequency	50 / 60 Hz (45-65Hz)					
	Power factor	> 0.99					
OUTPUT	Rated voltage	Single-phase Three wire (1 ϕ +N+PE) 208 / 220 / 230 / 240VAC					
	Voltage accuracy	\pm 1%					
	Power factor	0.9					
	THDv (linear load)	<3%					
	Frequency	50 / 60 Hz (\pm 0.1% in battery mode)					
	On-line performance	89%		91%		92%	
	Waveform	Pure Sinewave					
	Crest factor	3:1					
	Overload	>125% for 1 min. / >150% for 200 ms					
BATTERY	Battery type	LiFePO4 and Lead acid, sealed, maintenance free					
	Rated voltage	36 VDC		72 VDC		72 VDC / 96 VDC	
	Charging voltage	41.1 VDC		82.2 VDC		82.2 VDC / 109.6 VDC	
	Charging current (Standard)	1A					
	Charging current (Long)	6A (12A optional)					
SYSTEM	Transfer time	0 ms (line mode \rightarrow battery mode)					
	Communication interface	RS232 port (Standard), USB, SNMP, dry contacts, and RS485 (Optional)					
GENERAL	Operating temperature	0 $^{\circ}$ C ~ +40 $^{\circ}$ C					
	Relative humidity	Up to 95%, non-condensing					
	Maximum operating altitude	< 1500 m					
	Acoustic noise at 1 meter	< 55 dB					
STANDARD	Safety	EN-IEC 62040-1					
	Electromagnetic compatibility	EN-62040-2					
	Operation	VFI-SS-11 (EN-62040-3)					
	Corporate certification	ISO 9001, ISO 14001, ISO 45001					
PHYSICAL	Dimensions (L x W x H) mm	440 x 325 x 86.5				440 x 600 x 86.5	
	Weight (kg)	11.3/ 5.6				25/10.5	
						26/11	

*information subject to change without prior notice

Osmium Tech Co., Ltd.

Headquarter: Old Madison Pike, Huntsville, AL 35806, United States

Europe Office: Calle Isaac Newton, Planta, 41092 Sevilla, ESPAÑA

www.osme-usa.com

